

CESA INFRASTRUCTURE INDABA

WESTERN CAPE INFRASTRUCTURE & DEVELOPMENT PROJECTS

CAPE TOWN INTERNATIONAL AIRPORT & GEORGE AIRPORT

10-YEAR DEVELOPMENT PLANS

↑ ✈ Terminals

↑ 🚻 Toilets

Shops



↑ 🏦 Banks



PRESENTED BY: BHARAT BHIKHA
12 MARCH 2020

AIRPORTS COMPANY
SOUTH AFRICA

CONTENTS

3



ACSA BUSINESS OVERVIEW

8



WESTERN CAPE: MAJOR
CAPITAL PROJECTS

28



OTHER ACSA AIRPORTS:
MAJOR CAPITAL PROJECTS



AIRPORTS COMPANY
SOUTH AFRICA



BUSINESS OVERVIEW





VISION 2025

To be the most sought-after partner in the world for the provision of airport management solutions by 2025.



Run airports

By running our airports **efficiently** and developing them **innovatively**, we will **enhance** the regional economy.



Develop airports

Improving our capacity and infrastructure **grows** our footprint through **effective** operation and partnerships.



Grow our footprint

A larger footprint provides more **impactful outcomes** for the **country** and the **world**.

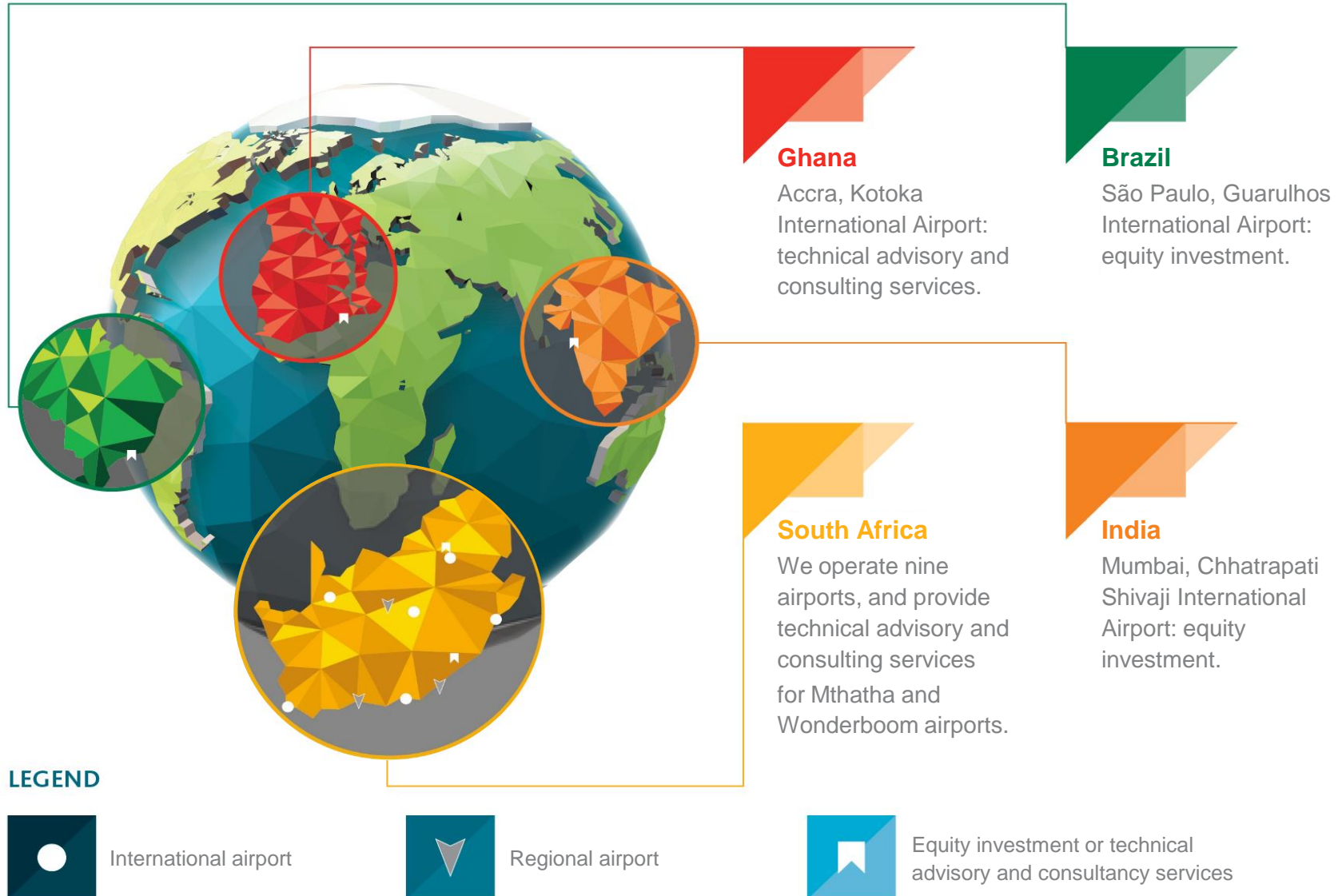
In line with the Airports Company Act, No. 44 of 1993, as amended, Airports Company South Africa is mandated to undertake the acquisition, establishment, development, provision, maintenance, management, operation and control of any airport, any part of any airport, or any facility or service at any airport normally related to an airport function.

NETWORK OF AIRPORTS



AIRPORTS COMPANY SOUTH AFRICA

5



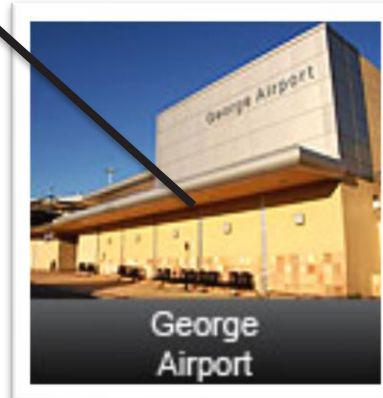
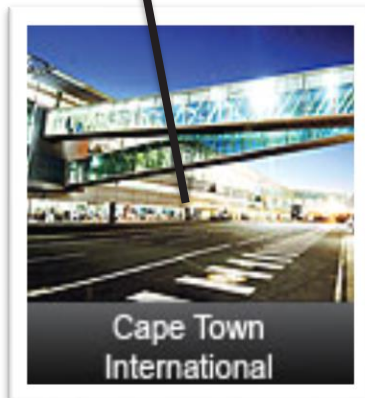
SOUTH AFRICA'S CONNECTIVITY



AIRPORTS COMPANY SOUTH AFRICA

6





SA Network of Airports

1. O.R. Tambo International Airport
2. Cape Town International Airport
3. King Shaka International Airport
4. Port Elizabeth International Airport
5. East London Airport
6. George Airport
7. Bram Fischer International Airport
8. Kimberley Airport
9. Upington International Airport

MAJOR CAPITAL PROJECTS

WESTERN CAPE





CAPE TOWN INTERNATIONAL AIRPORT

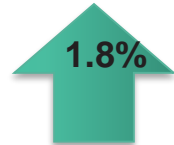


CAPE TOWN INTERNATIONAL AIRPORT PASSENGER GROWTH



AIRPORTS COMPANY SOUTH AFRICA

10



1.8%

2019 – 10.979 million



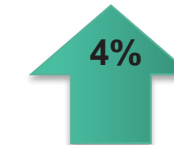
0.8%

2018 – 10.777 million



7%

2017 – 10.693 million



4%

2016 – 10.090 million

2015 – 9.6 million



SOUTH AFRICA

CAPE TOWN INTERNATIONAL AIRPORT MASTER PLAN



AIRPORTS COMPANY SOUTH AFRICA

11



MAJOR PROJECTS (1)



NEW REALIGNED RUNWAY

**TOTAL SPEND ESTIMATE
OVER THE NEXT 5 YEARS:
R8.35 BILLION**

**TERMINAL 2 DEVELOPMENT
(INTERNATIONAL EXPANSION)**

NEW DOMESTIC ARRIVALS



MAJOR PROJECTS (2)



**INTERNATIONAL DEPARTURE LOUNGE &
CODE F AIR BRIDGES & (Wide body)
AIRCRAFT PARKING STANDS**

**AIRCRAFT PARKING
STANDS**

**DOMESTIC BOARDING LOUNGE &
AIR-BRIDGES**



NEW REALIGNED RUNWAY

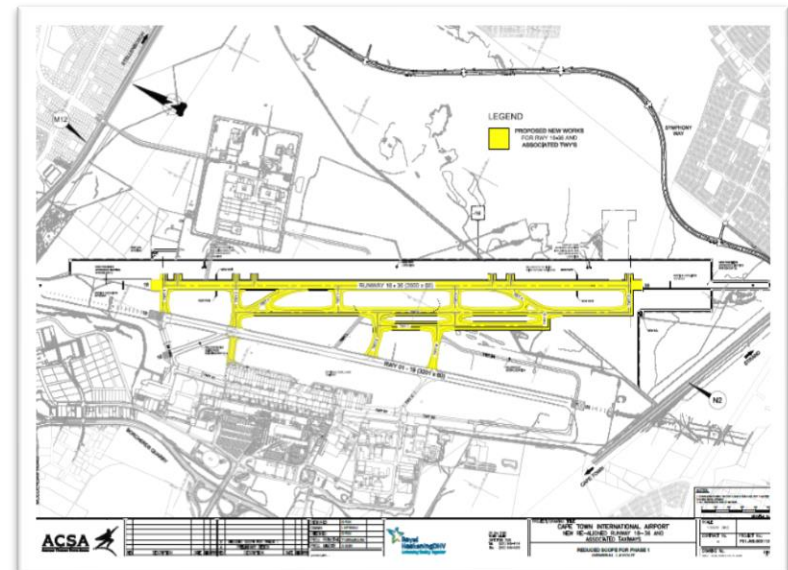
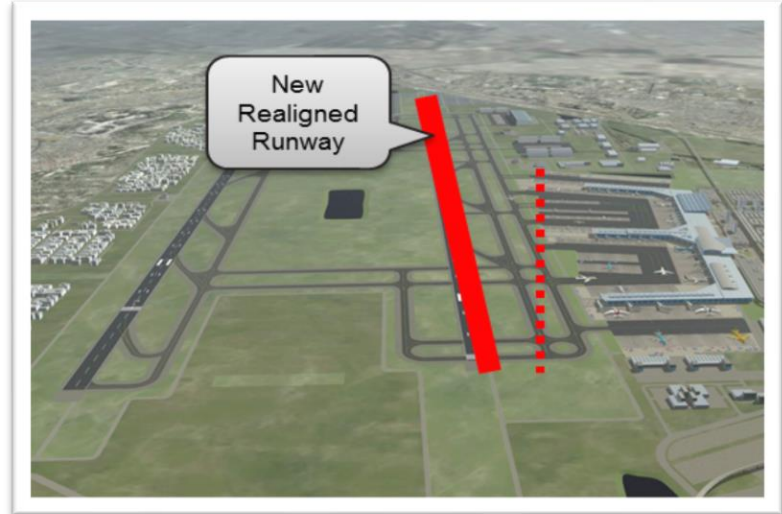


Project Description

- The existing runway will be displaced at the northern end with 220m to the east and rotated at angle of 11.5 degrees.
- The new realigned runway will be fully Code F compliant.
- The runway will initially include two rapid exit taxiways and a partial parallel taxiway as indicated on the layout
- The environmental authorisation has been secured and the project is out to market.

Proposed Timing:

Construction: 2020 - 2022



INTERNATIONAL TERMINAL 2 DEVELOPMENT



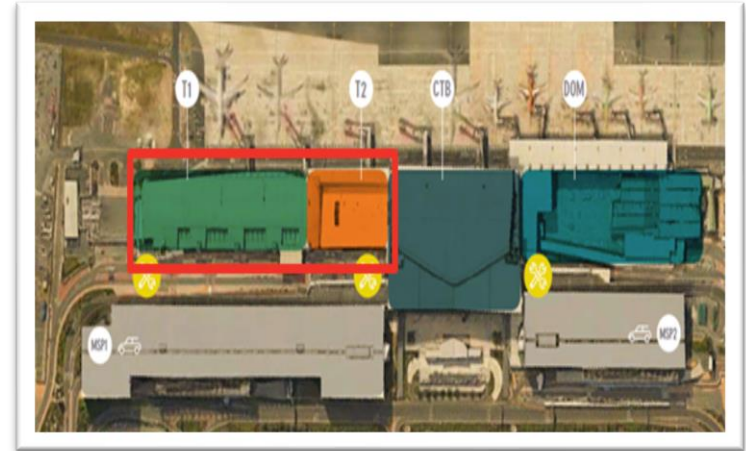
Project Description

The Terminal 2 International Development comprises of the following:

- The expansion of the international departure baggage hall
- The addition of 2 code F international carousels
- The reconfiguration of the customs and meeters & greeters areas
- New e-emigration gates
- Additional self service check-in & security capacity
- New arrivals retail mall
- New basement level

Proposed Timing:

Planning complete: June 2019
Construction: 2020 - 2023



INTERNATIONAL TERMINAL 2 DEVELOPMENT



AIRPORTS COMPANY SOUTH AFRICA

16



AIRPORTS COMPANY
SOUTH AFRICA

INTERNATIONAL TERMINAL 2 DEVELOPMENT



AIRPORTS COMPANY SOUTH AFRICA

17



AIRPORTS COMPANY
SOUTH AFRICA

INTERNATIONAL TERMINAL 2 DEVELOPMENT



AIRPORTS COMPANY SOUTH AFRICA

18



AIRPORTS COMPANY
SOUTH AFRICA

NEW DOMESTIC ARRIVALS DEVELOPMENT



Project Description

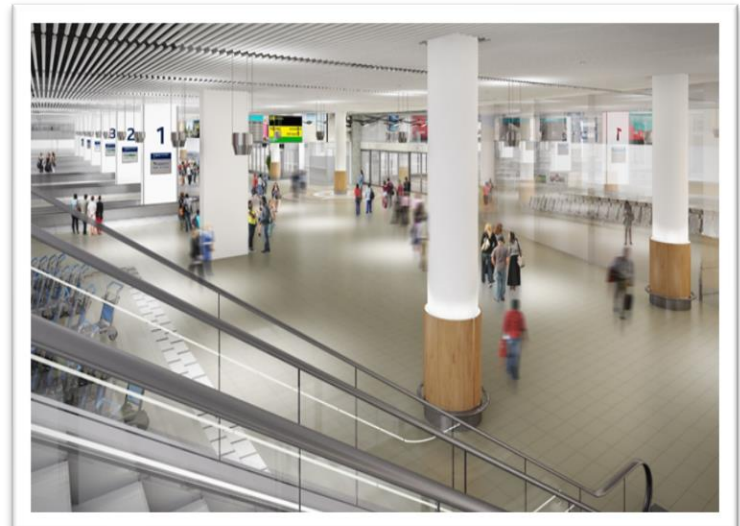
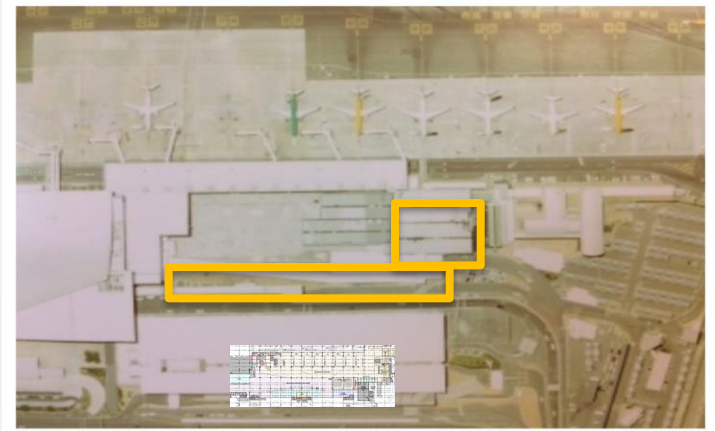
The Domestic Arrivals Terminal project entails the re-orientation of the existing domestic arrivals terminal.

The project scope includes the following :

- Increased meeters & greeters area
- Increased baggage reclaim area that will provide additional space between carousels
- An additional baggage carousel
- Basement level for deliveries & commercial storage
- Second Floor retail enablement (adjoining domestic departure lounge)

Project Milestones

Planning complete:	July 2019
Construction:	2020 - 2023

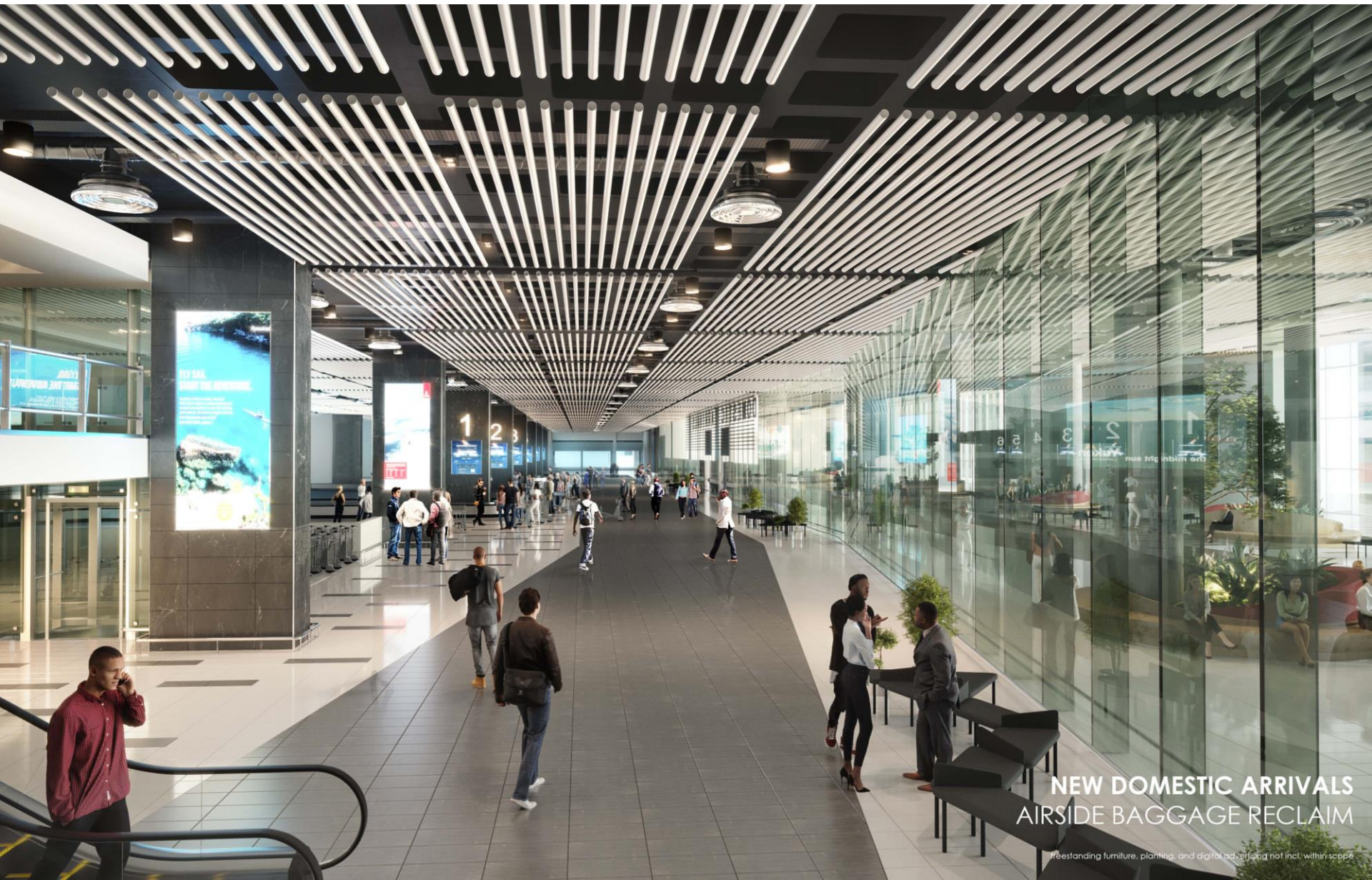


NEW DOMESTIC ARRIVALS DEVELOPMENT



AIRPORTS COMPANY SOUTH AFRICA

20



**NEW DOMESTIC ARRIVALS
AIRSIDE BAGGAGE RECLAIM**

Free-standing furniture, planting, and digital advertising not incl. within scope

NEW DOMESTIC ARRIVALS DEVELOPMENT



AIRPORTS COMPANY SOUTH AFRICA

21



NEW DOMESTIC ARRIVALS LANDSIDE CONCOURSE

freestanding furniture, sculptural installation, and planting not incl. within scope

NEW DOMESTIC ARRIVALS DEVELOPMENT



AIRPORTS COMPANY SOUTH AFRICA

22



**NEW DOMESTIC ARRIVALS
MEETERS AND GREETERS**

freestanding furniture, planting, and digital advertising not incl. within scope

NEW DOMESTIC ARRIVALS DEVELOPMENT



AIRPORTS COMPANY SOUTH AFRICA

23



**NEW DOMESTIC ARRIVALS
FUTURE LANDSIDE ELEVATION**

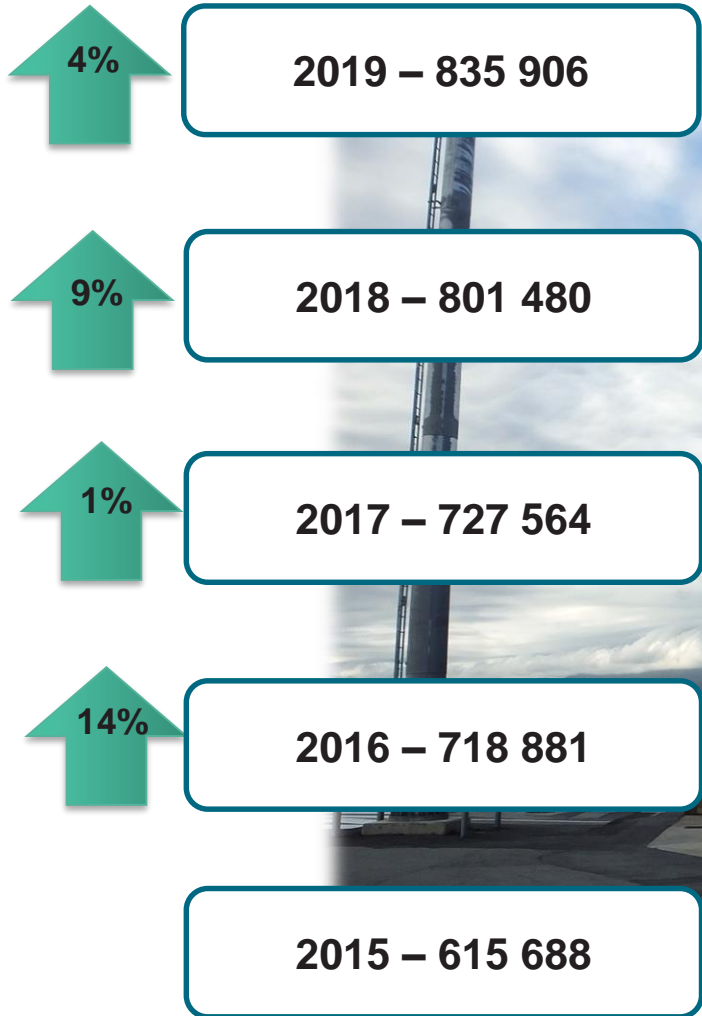
second and third floor external glazing not incl. within scope



GEORGE AIRPORT



GEORGE AIRPORT PASSENGER GROWTH



GEORGE AIRPORT TERMINAL EXPANSION



Project Description

The George Terminal project entails the expansion of the departure lounge, arrival and departure concourses, additional check counters and security check points.

The project scope includes the following :

- Increased departure lounge and airline airline- lounges
- Additional security processing and queuing maze reconfiguration
- Additional retail opportunities
- Increase arrival/departure concourse



Projected Timelines: 2020 - 2024



GEORGE AIRPORT CODE C STAND



Project Description

The George Terminal project entails the constructing an additional stand linked to the existing apron to increase overall capacity.

The project scope includes the following :

- Additional Code C stand to the existing apron
- Relocation of AVGAS for safety and refurbishment.
- Taxiway and stand required for new site of relocation.



Projected Timelines: 2021 - 2022



MAJOR CAPITAL PROJECTS

OTHER ACSA AIRPORTS





CAPITAL PROJECTS



Airport	Project	Timeline
OR Tambo International	Midfield Cargo Terminal	2023-2028
	Western Precinct Development	2019-2020
	Remote Aprons Stands	2020-2022
	Midfield Terminal Complex	2024-2028
King Shaka International	Apron Development & Taxiway Extension	2018-2020
East London Airport	Departures Lounge	2020-2021
Bram Fisher Airport	Terminal Expansion	2020-2024
Port Elizabeth Airport	Terminal Expansion	2024-2025
Kimberley Airport	Terminal Upgrade	2022
Upington Airport	Terminal Expansion	2021

DISCLAIMER



The information contained in this presentation is **confidential**, and is intended solely for this presentation. This presentation may contain information proprietary to the Airports Company South Africa SOC Limited (“the Company”), and may not be reproduced or disseminated in whole or in part without the Company's written consent. The Company is not acting as your adviser in any transaction that may be proposed herein, and this presentation does not constitute a recommendation, guidance or proposal to enter into any transaction. Any decision to enter into a transaction should be made on the basis of information contained within an offering circular, programme memorandum or prospectus published in relation to such an offering. The Company does not guarantee or otherwise assure the expected results of any transaction as envisaged in this presentation. You shall not be entitled to place any reliance on the information contained in this presentation for the purposes of entering into any proposed transaction or otherwise.

DRIVING NEW FRONTIERS FOR SUSTAINABLE GROWTH



AIRPORTS COMPANY
SOUTH AFRICA