



# Engineering the Future We Want: **Mobilising for Sustainable Development**

**18-19**  
**MARCH 2025**  
Indaba Hotel,  
Fourways,  
Johannesburg

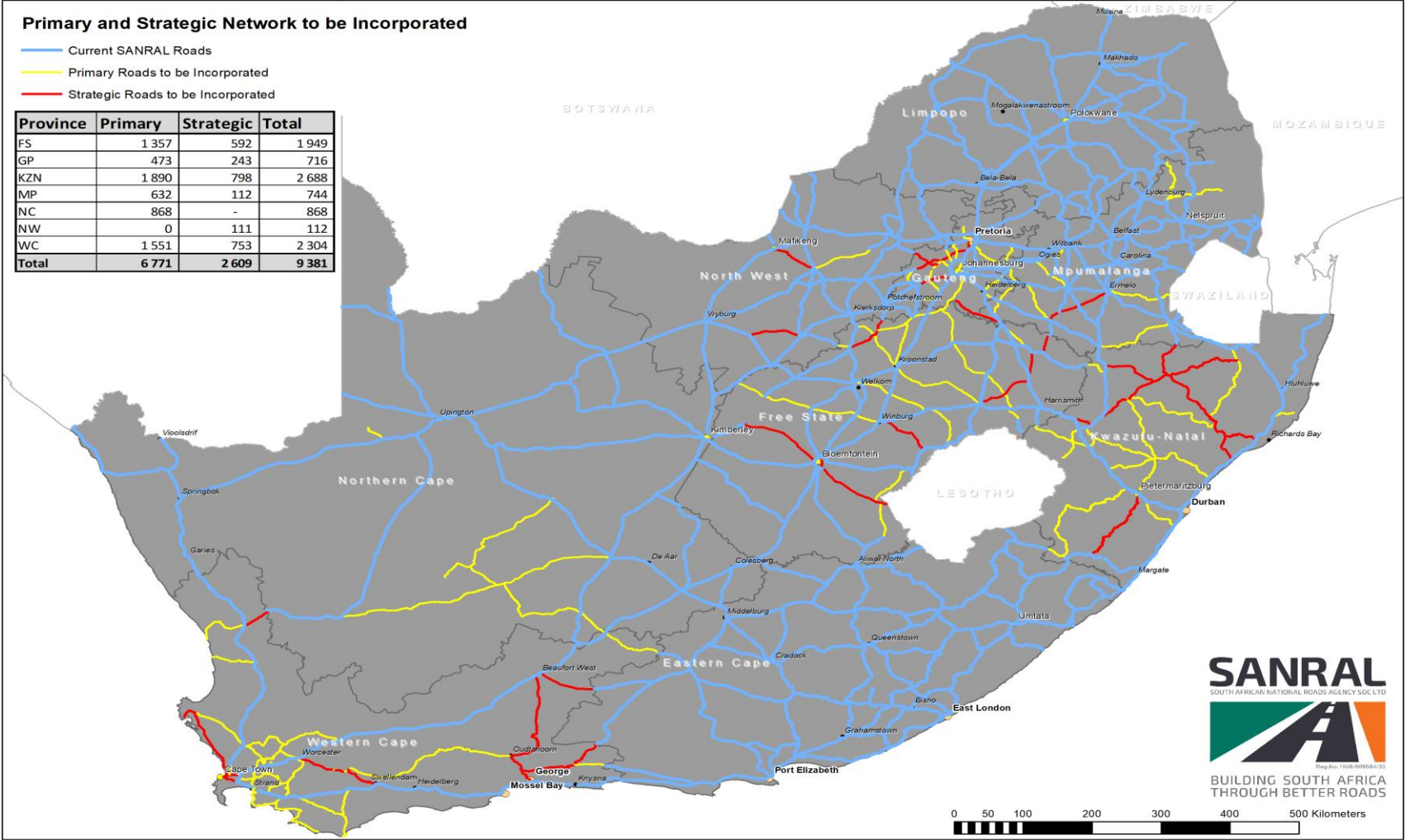
Presentation Title: **The road  
to a sustainable future**

P Hlahla  
Provincial Head, Gauteng



## SANRAL ROAD NETWORK - BREAKDOWN BY PROVINCE

Province	Paved (Km)	Gravel (Km)	Total (Km)
EC	5 483	402	5 885
NC	4 359	113	4 472
LP	4 394	-	4 394
MP	3 410	-	3 410
FS	3 051	7	3 058
NW	2 642	-	2 642
WC	1 465	-	1 465
KZN	1 321	-	1 321
GP	854	-	854
<b>Total</b>	<b>26 979</b>	<b>522</b>	<b>27 501</b>



— Current SANRAL Roads  
— Primary Roads to be Incorporated  
— Strategic Roads to be Incorporated

Province	Primary	Strategic	Total
FS	1 357	592	1 949
GP	473	243	716
KZN	1 890	798	2 688
MP	632	112	744
NC	868	-	868
NW	0	111	112
WC	1 551	753	2 304
Total	6 771	2 609	9 381

## Where are we?



### ■ Budget

- We can all use a bit more



### ■ Skills shortage

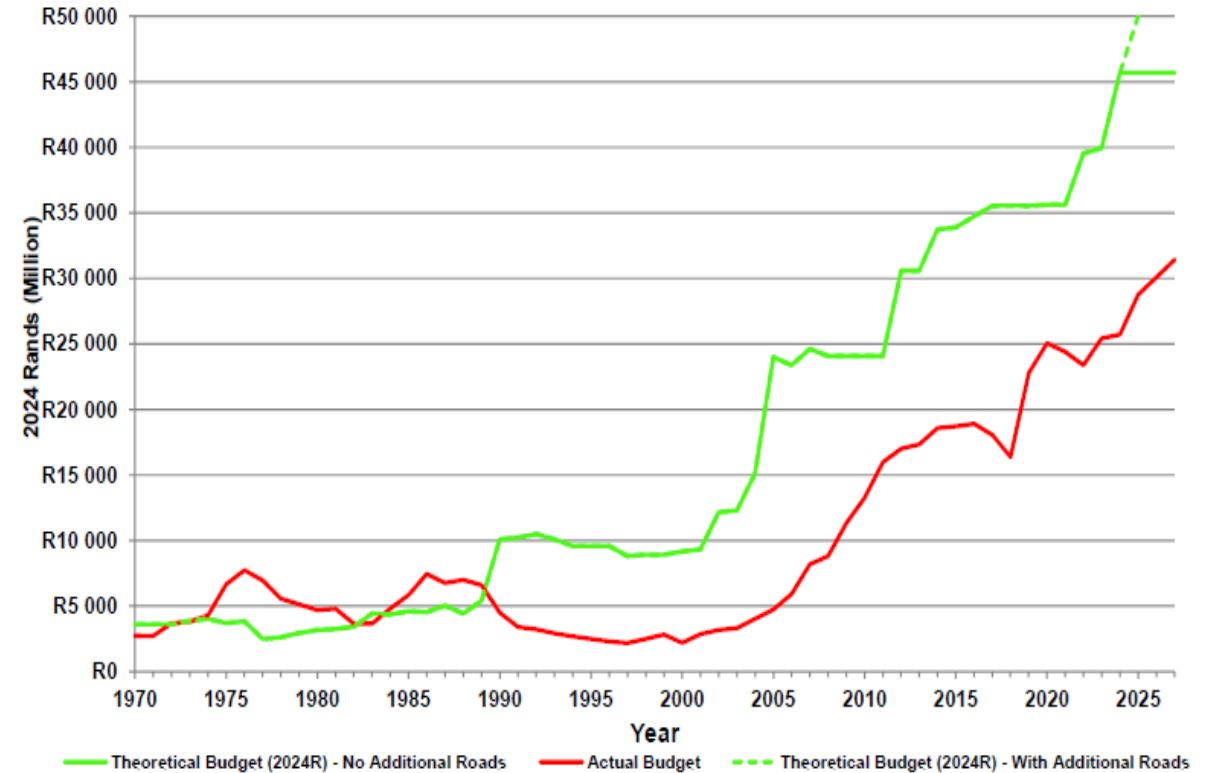
- Brain drain challenge – where did they all go?



### ■ Concentrated industry

- Room for more players?
- Entry of new multinationals
  - BRICS partners
- Spare a thought for Targeted enterprise's and SMMEs.

**Basic Budget Requirement Trend**  
Excludes Addressing Backlogs and Expansions





## Where are we?



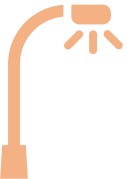
### ■ Poverty, Inequality and Unemployment

- Are there more answers than BBBEE?
- Does the pvt sector have additional answers for us?



### ■ Climate change

- Is there an opportunity?



### ■ Infrastructure damage

- Time to crack the whip?

### ■ Road deaths



Our law enforcement officers issued 711,184 fines for various traffic offences across the country. Some 23,607 fines were issued to drivers who failed to wear seatbelts, while another 16,925 motorists were fined for using cell phones while driving. Then, 16,527 vehicles were found to be unroadworthy and issued with traffic fines as well as their motor vehicle licence discs removed particularly in areas where vehicles could not be impounded due to lack of impoundment facilities. It must however be emphasized that, in total, 8,917 motor vehicles were impounded in areas where facilities were available.

- Over what period do you think this was?

# How do we solve this?

## Budget constraints

- Road / Infrastructure Funding Policy
- User Pay Principle
  - Opens up to PPP such as current concessions
  - Maybe our pensions must be invested here for posterity?
- Congestion and other charges?
- Time for DOGE?

## Skills shortage

- We must all train
  - SANRAL established a training academy in the Eastern Cape
  - We offer bursaries
  - We offer scholarships
- What about you?
  - How many interns do you have?
  - How many bursaries/scholarships have you offered?

# How do we solve this?

## Expanding into the value chain

- Many sectors require construction
  - Energy production and transmission,
- What about other markets in Africa?
  - Mozambique has gas – time for PPP there?
  - Maybe engage DIRCO/Ambassadors to host key business indabas in host states for us to engage?
  - What support do we need and how do we get it?

## Stakeholder management

- Systems are already in place. Able to escalate to delegated individuals(Brigadiers) to act.
- Is there a way for them to become legitimate business players?
- What of legitimate concerns from communities?

# How do we solve this?

## **Poverty, Inequality and Unemployment**

- Invest in infrastructure
  - It is well documented that investment and economic growth follow infrastructure
  - How do we encourage more private sector participation?
- What are we importing and how do we substitute with local products?
- What are we exporting and how do we find new markets?
  - What is SADC importing? Are we the ones supplying the products?
  - What about BRICS?
- Path to better competitiveness?
  - How can shipped goods be cheaper when they reach our shores than we produce locally?



# How do we solve this?

## Climate change

- New technologies
  - NME
  - Self healing concrete
  - AI analysis for new materials
- New Technical guidelines
  - TRH24
- We need more value engineering



## Infrastructure damage

- Tighten our response
  - Both gvt and pvt sector
  - Dedicated courts for economic sabotage?
  - Use of non-metals

# How do we solve this?

## Road deaths

- Partnership in law enforcement
  - Maybe time for insurers to also weigh in and stop insuring speedsters?
  - Average Speed Over Distance prosecution
  - Weigh in motion solutions
- Do we need speed limiters?

# Conclusions - Way forward



## A sustainable future

- Budgets must stabilize.
  - We know the trends, we must plan within that.
- Social and environmental challenges must be solved through home grown solutions.
  - Yes, climate is changing for everybody, but the impact is not the same.
  - If you agree, then what have you done to address this?
- Inclusivity is necessary.
- A broader view of challenges in Africa as opportunities is required.
  - We must think less of aid and more of leveraging what we already have.
- Gvt support remains key.

Sustainable development, as defined by the World Commission on Environment and Development, is "***development that meets the needs of the present without compromising the ability of future generations to meet their own needs***". It's about balancing economic growth, social inclusion, and environmental protection.