

## Engineering Dreams Take Flight in Cape Town

On 20 June, SMEC's Cape Town Young Professionals Forum hosted 15 Christel House learners for a hands-on glimpse into consulting engineering. From bridge-building challenges to office tours and technical talks, the day was packed with engaging activities.



The highlight was a site visit to the Govan Mbeki Elevated Circle, a major SMEC project and one of the first elevated roundabouts in South Africa. SMEC has supported Christel House in various ways over the years, and this visit continued that meaningful connection – sparking curiosity and inspiring career dreams.



**Stick to innovation:** Bridge building challenge that sparked fresh thinking.



**Masters of the marshmallow bridge:** Winners of the bridge building challenge.



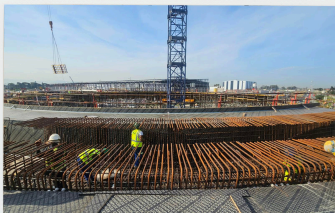
**Bridging the disciplines:** A glimpse into engineering specialisations.



**Behind the screens:** A closer look at the people and projects shaping our nation.



**Upward thinking:** Conceptual view of the elevated circle.



**Future foundations:** Students explore the structure and scope.



**Elevated view:** South Africa's first elevated roundabout project.



**A rare opportunity:** Students witness construction in progress.



**Design in motion:** Understanding the design behind the sky circle

### A SKY-HIGH EXPERIENCE

Students touch down at the Govan Mbeki Elevated Sky Circle.